



OAKFIELD



OCEAN  
HOUSE



OCEAN HOUSE

London Road, St. Leonards, TN37 6FL

£1,045 Per Calendar Month



## London Road, St. Leonards, TN37 6FL

This well-presented eighth-floor apartment offers impressive elevated views and has been furnished to a high standard throughout, creating a stylish and comfortable living space.

The property features a contemporary open-plan living and kitchen area complete with integrated appliances, alongside a sleek, modern shower room finished with quality fittings, and a well-proportioned double bedroom.

Further benefits include fitted blinds, secure intercom entry, modern electric heating, and lift access to all floors, as well as convenient on-site amenities such as a 24/7 parcel room and caretaker.

Ideally positioned just a short five-minute walk from the beach and the mainline station, the apartment also enjoys easy access to a vibrant selection of independent shops, cafés, restaurants, and Hastings town centre.

Please note:  
Any provided furniture will not be maintained or repaired by the landlord.  
An annual household income of £31,350 will be required to meet the affordability criteria.  
Available Now.





### Living Room / Kitchen

18'9" (narrowing to 7'4") x 14'4"  
(narrowing to 10 (5.73m (narrowing to  
2.24m) x 4.39m (narrowing to 3)

### Bedroom

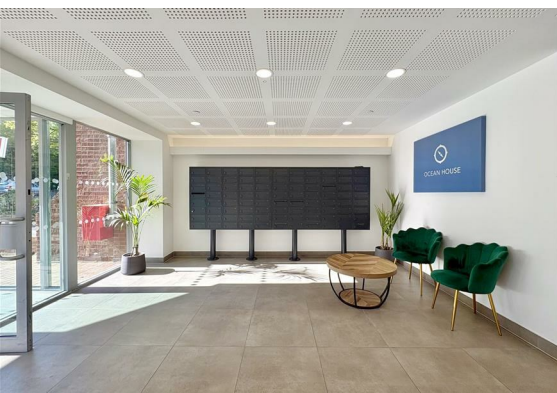
10'8" x 9'5" (3.26m x 2.88m)

### Shower Room

6'10" x 5'2" (2.09m x 1.6m)

**Council Tax Band A - £1,784.39 Per  
Annum**

**Lift and stairs to all floors**



## Floor Plan



## Viewing

Please contact us on 01424 446644 if you wish to arrange a viewing appointment for this property or require further information.

These particulars, whilst believed to be accurate are set out as a general outline only for guidance and do not constitute any part of an offer or contract. Intending purchasers should not rely on them as statements of representation of fact, but must satisfy themselves by inspection or otherwise as to their accuracy. No person in this firm's employment has the authority to make or give any representation or warranty in respect of the property.

## Area Map



## Energy Efficiency Graph

